



Annual Report 2023


***YOUR SUPPORT
MAKES AN IMPACT***





TABLE OF CONTENTS

Letter from the CEO	3
About Life	4
Program Activities Map	5
Emergency Response	6
Health Programs	7
Education Programs	8
Community Development	9
Orphans	10
Family Assistance	11
Water & Sanitation Programs	12
Seasonal Programs	13
Financials	14
Thank you	18



For life-long humanitarian workers, 2023 was challenging as the number of climate- and conflict-driven humanitarian crises was considerable — the number of earthquakes, floods, and droughts increased, while conflict continued to displace millions. Your support has enabled LIFE to bring strength, and dignity to communities around the globe during these crises. Our vision of a more compassionate equitable world is brought to life because every one of you — our donors, partners, and volunteers — whose dedication to humanity energizes the work we do each day.

This year, we expanded our emergency relief efforts to meet the needs of families devastated by both man-made and natural disasters. From the devastating earthquakes in Afghanistan, Nepal, Morocco, and Turkey to the ongoing strife in Gaza, we provided nearly \$1.1 million in emergency aid to displaced families. Our programs offered shelter, food, water, and medical care where it was needed most. In the realm of healthcare, we continued to provide life-saving medical assistance to underserved communities. Through the distribution of \$6.4 million in medical supplies and equipment, including hearing aids, we reached thousands of people in countries like Ghana, Pakistan, and Sierra Leone. Our efforts ensured that hospitals and clinics operating in challenging conditions could continue providing care.

Our education programs grew this year, with over \$4.5 million dedicated to educational programs, we impacted thousands of students worldwide. Through the distribution of school supplies, uniforms, and books, we made sure that children from disadvantaged backgrounds had the tools they need to pursue their education and excel. This year, our Back-to-School Program reached over 32 countries, reaffirming our commitment to promoting literacy and providing opportunities for learning for everyone.

Equally, our Orphan Sponsorship program, which provides food, shelter, education, and healthcare to orphans, saw tremendous success. With over \$3.8 million allocated to this cause, we were able to support over 13,100 orphans in 38 countries. These children, many of whom are living in the most vulnerable situations.

Our work is a result of collective action—what happens when many people come together, despite challenging situations, and choose to act for the betterment of humanity. Once again thank you to our donors, partners and volunteers for your support. Your acts of kindness this past year have had a positive impact on communities worldwide. Join us this year as we continue to harness the power of collective action to address the world's most pressing issues.

Sincerely,

Hany Saqr, M.D, Ph.D.,

President & Chief Executive Director LIFE for Relief and Development

Our Vision and Purpose

Life for Relief and Development's vision is deeply rooted in the belief that saving lives should be a priority of all humankind. For this reason, LIFE is dedicated to alleviating human suffering regardless of race, color, religion, or cultural background. In response to poverty, famine, social and economic turmoil, natural disasters, war, and other catastrophes, LIFE works to provide assistance to people across the globe by offering humanitarian services such as food, water, and temporary shelter as well as healthcare and education.

Organizational Background

Life for Relief and Development is a non-profit humanitarian organization founded in 1992 by a group of dedicated American professionals in response to the humanitarian crises that emerged in Iraq after the 1991 Gulf War. Thanks to the extraordinary generosity of its donors, LIFE has provided over \$623.9 million in humanitarian assistance worldwide, impacting millions of lives with compassion and care.

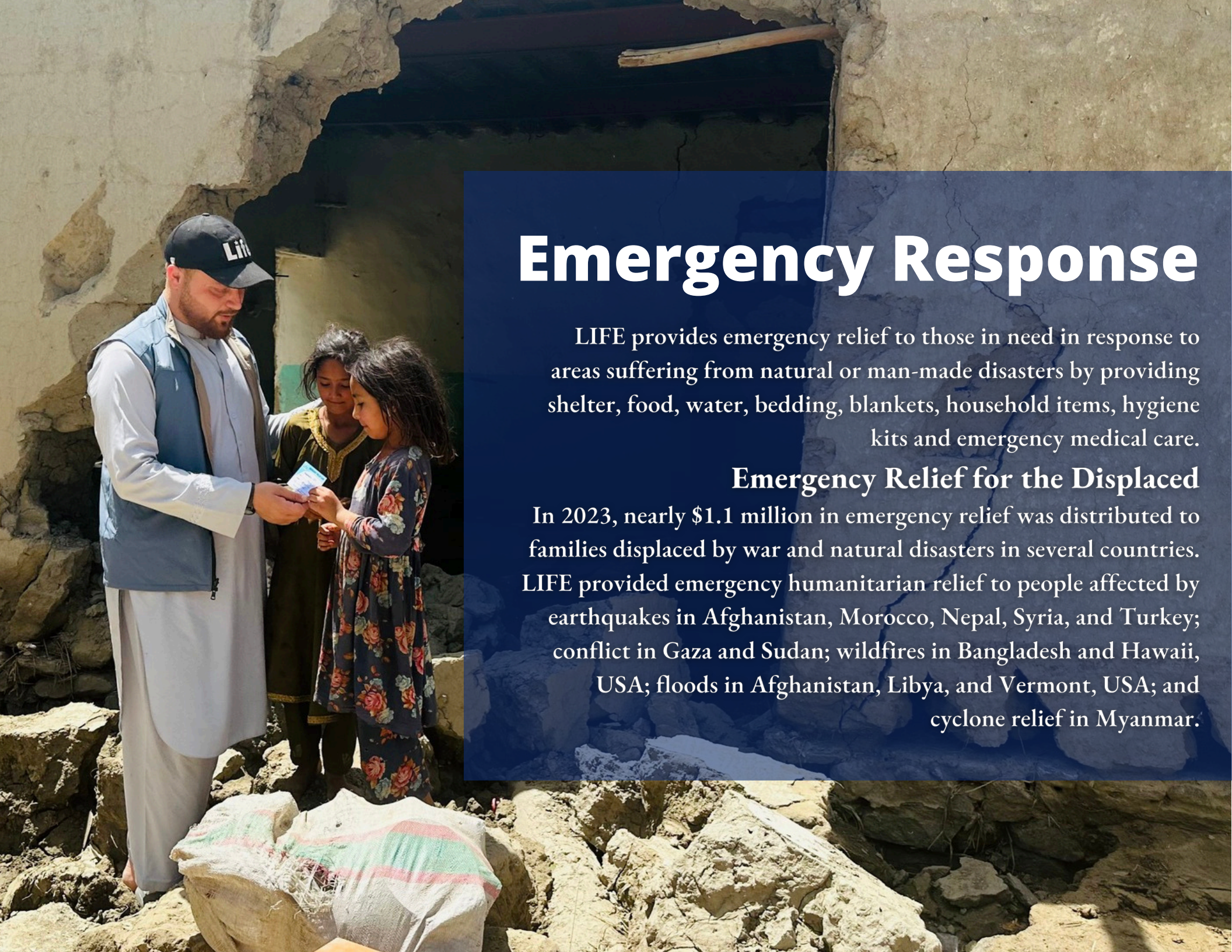


Program Activities Map



Countries Worked In

AFGHANISTAN · BANGLADESH · BOSNIA · DJIBOUTI · DOMINICAN REPUBLIC · EGYPT · ETHIOPIA · GAMBIA · GHANA · GUINEA · HAITI · INDIA · INDONESIA · IRAQ · IVORY COAST · JORDAN · KENYA · LEBANON · LIBYA · MALI · MALAYSIA · MAURITANIA · MEXICO · MOROCCO · MYANMAR · NEPAL · NIGER · NIGERIA · PAKISTAN · PALESTINE · RWANDA · SENEGAL · SIERRA LEONE · SOMALIA · SRI LANKA · SUDAN · SYRIA · TANZANIA · TOGO · TURKEY · UGANDA · UKRAINE · UNITED ARAB EMIRATES · USA · YEMEN · ZAMBIA



Emergency Response

LIFE provides emergency relief to those in need in response to areas suffering from natural or man-made disasters by providing shelter, food, water, bedding, blankets, household items, hygiene kits and emergency medical care.

Emergency Relief for the Displaced

In 2023, nearly \$1.1 million in emergency relief was distributed to families displaced by war and natural disasters in several countries. LIFE provided emergency humanitarian relief to people affected by earthquakes in Afghanistan, Morocco, Nepal, Syria, and Turkey; conflict in Gaza and Sudan; wildfires in Bangladesh and Hawaii, USA; floods in Afghanistan, Libya, and Vermont, USA; and cyclone relief in Myanmar.



Health Programs

Hearing Aid Installations, Medical Supply and Equipment Distributions

Nearly \$6.4 million in health programs was distributed by LIFE which included hearing aid humanitarian trips in the USA, Zambia, Mexico, and the West Bank. Additionally, LIFE shipped medical supplies and equipment to underserved hospitals and clinics in Ghana, Ivory Coast, Mali, Mauritania, Pakistan, Senegal, Sierra Leone, and Ukraine.

Education Programs

Back-to-School Program and Book Distributions

Literacy was promoted through the distribution of books to colleges, universities, and primary and secondary schools. LIFE also donates classroom furniture to schools in need worldwide and provides orphans and disadvantaged children with uniforms, shoes, and school bags filled with stationery, pens, and other educational materials through its Back-to-School programs. LIFE also participates in providing food for students in primary and secondary schools across Africa.

In-Kind Distributions and Education Programs

LIFE implemented over \$4.5 in education projects in 2023. In-kind shipments valued at nearly \$2.1 million were sent to Ghana and distributed to schools in the USA, Mexico, Ghana and Sierra Leone. Education programs were implemented in Afghanistan, Bangladesh, Bosnia, Ethiopia, Gambia, Ghana, Haiti, Indonesia, Iraq, Ivory Coast, Mali, Mauritania, Myanmar, Nigeria, Pakistan, Senegal, Sierra Leone, Sri Lanka, Syria, Togo, Turkey, Uganda, Yemen, and the USA.



Community Development

Community Centers

Community centers are built by LIFE around the world, providing spaces where people come together for social events and support. In 2023, LIFE assisted communities in need in Ghana, Jordan, Lebanon, Syria and Iraq.





Orphans

The Orphan Sponsorship program at LIFE provides food, shelter, education and healthcare to orphans all over the world and holds Eid celebration parties in several countries giving orphans new clothing, gifts, toys and a party to celebrate.

LIFE provided over \$3.8 million in Orphan Sponsorship to over 13,100 orphans and held Eid celebrations for orphans in the following countries: Afghanistan, Bangladesh, Bosnia, Djibouti, Ethiopia, Gambia, Gaza, Ghana, Haiti, India, Indonesia, Iraq, Ivory Coast, Jordan, Kenya, Lebanon, Malaysia, Mali, Mauritania, Niger, Nigeria, Pakistan, Rwanda, Senegal, Sierra Leone, Somalia, Sri Lanka, Syria, Sudan, Tanzania, Turkey, Uganda, West Bank and Yemen.

Foster Children Sibling Christmas Gift Exchange

LIFE provided Christmas gifts for foster children in Michigan to exchange with their siblings during the holiday season. In-kind shipments valued at nearly \$2.1 million were sent to Ghana and distributed to schools in the USA, Mexico, Ghana and Sierra Leone. Education programs were implemented in Afghanistan, Bangladesh, Bosnia, Ethiopia, Gambia, Ghana, Haiti, Indonesia, Iraq, Ivory Coast, Mali, Mauritania, Myanmar, Nigeria, Pakistan, Senegal, Sierra Leone, Sri Lanka, Syria, Togo, Turkey, Uganda, Yemen, and the USA.

A photograph of a LIFE staff member, seen from behind, wearing a blue jacket with "STAFF" and the LIFE logo on the back. The staff member is carrying a young girl on their shoulders and holding the hand of another child. They are walking on a dirt path in a makeshift settlement with tents and simple structures in the background.

Family Assistance

Family Assistance

LIFE's Family Assistance program provided families and individuals winter relief, food aid and household furniture in several countries including the USA. Firewood for heating, along with winter blankets, coats, jackets, mittens, and hats, was distributed to needy families in Bangladesh, Bosnia, Lebanon, and Syria. Food aid was provided to displaced individuals and impoverished families in Afghanistan, Bangladesh, Djibouti, Gaza, Ghana, India, Indonesia, Jordan, Kenya, Pakistan, Somalia, Sudan, Tanzania, Turkey, Uganda, and Yemen. In total, nearly \$1.4 million in in-kind food aid was shipped and distributed to families in need across Ghana, Sierra Leone, and Somalia.

Water & Sanitation Programs

LIFE recognizes the critical importance of providing clean water to communities, ensuring access to safe drinking water, promoting good hygiene, supporting public health, and sustaining livestock populations.

Water Wells

In 2023, LIFE constructed 122 water wells in Afghanistan, Bangladesh, Ethiopia, Gambia, Ghana, Kenya, Myanmar, Pakistan, Senegal, Sierra Leone, Somalia, and Uganda.



A man in a blue LIFE vest is carrying a white box labeled "RAMADAN 2023 TURKEY" towards a woman in a blue headscarf. The box also features a QR code and the LIFE 30 logo. The background shows a tent and some buildings.

Seasonal Projects

In 2023, LIFE implemented seasonal projects for nearly \$1.7 million which included Ramadan food, iftar meals and Eid gift distributions, fresh Udhiyah/Qurbani meat distributions and Thanksgiving turkey dinner distributions.

Food Basket Distributions (Ramadan)

During Ramadan, LIFE distributed over 8.2 million meals to needy families. LIFE also provided nearly 30,000 Iftar meals to communities in need, while distributing Eid holiday gifts to poor children and orphans. The Ramadan distributions took place in 36 countries.

Fresh Meat Distributions (Udhiya/Qurbani)

Eid al-Adha is a highly anticipated holiday for many Muslim families worldwide, marking a time of celebration and the sharing of fresh meat. For many families in need, the holiday provides a rare opportunity to receive fresh gifted meat, as they are unable to afford it throughout the year. During Eid al-Adha, LIFE distributed fresh Qurbani/Udhiyah meat to 272,062 people across 38 countries.

Thanksgiving Distributions

LIFE provided Thanksgiving turkeys and 180 food boxes, each filled with everything needed to prepare a full Thanksgiving meal, to families in need in the Detroit area.

ASSETS

Current assets

Cash and cash equivalents	\$ 7,755,336
Pledges receivable, net of allowance	108,645
Prepaid expenses and other	649,673
Inventories (in-kind contributions)	<u>14,400</u>
Total current assets	<u>8,528,054</u>

Property and equipment

Land	57,750
Building	327,250
Building improvements	456,304
Furniture, fixtures and equipment	74,124
Vehicles	<u>183,261</u>
Total cost	1,098,689

Less, accumulated depreciation	<u>762,183</u>
--------------------------------	----------------

Total property and equipment	<u>336,506</u>
-------------------------------------	-----------------------

Total assets	<u>\$ 8,864,560</u>
---------------------	----------------------------



LIABILITIES AND NET ASSETS

Current liabilities

Accounts payable	\$ 1,057,057
Accrued expenses	<u>77,664</u>
Total current liabilities	<u>1,134,721</u>

Net assets

Without donor restrictions	187,352
With donor restrictions	<u>7,542,487</u>
Total net assets	<u>7,729,839</u>

Total liabilities and net assets	<u>\$ 8,864,560</u>
---	----------------------------

CONSOLIDATED STATEMENT OF ACTIVITIES
YEAR ENDED DECEMBER 31, 2023

	<u>Without Donor Restrictions</u>	<u>With Donor Restrictions</u>	<u>Total</u>
Support and revenue			
Contributions	\$ 4,616,362	\$ 14,342,285	\$ 18,958,647
In-kind contributions:			
Medicine and medical supplies	-	6,297,824	6,297,824
Educational materials	-	2,532,581	2,532,581
Food baskets	-	1,226,989	1,226,989
Furniture and equipment	-	4,019,943	4,019,943
Emergency and disaster relief	-	2,624,183	2,624,183
Other income	114	-	114
Interest income	19,374	-	19,374
	<u>4,635,850</u>	<u>31,043,805</u>	<u>35,679,655</u>
Total support and revenue before releases			
Net assets released from restrictions	<u>29,697,252</u>	<u>(29,697,252)</u>	<u>-</u>
Total support and revenue	34,333,102	1,346,553	35,679,655
Expenses			
Program services	32,143,639	-	32,143,639
Management and general	1,429,970	-	1,429,970
Fundraising	1,312,252	-	1,312,252
	<u>34,885,861</u>	<u>-</u>	<u>34,885,861</u>
Total expenses			
Change in net assets	(552,759)	1,346,553	793,794
Net assets, beginning of year	<u>740,111</u>	<u>6,195,934</u>	<u>6,936,045</u>
Net assets, end of year	<u>\$ 187,352</u>	<u>\$ 7,542,487</u>	<u>\$ 7,729,839</u>





CONSOLIDATED STATEMENT OF FUNCTIONAL EXPENSES YEAR ENDED DECEMBER 31, 2023

	Program Services					
	Health and Safety Program	Educational Program	Emergency Disaster Relief Program	Orphans Program	Food Basket Programs	Clean Water Project Programs
Payroll Expenses:						
Compensation	\$ 8,241	\$ 9,051	\$ 603,801	\$ 769,020	\$ 29,285	\$ 107,179
Employment taxes and benefits	2,105	2,312	154,232	196,435	7,480	27,377
Total payroll expenses	10,346	11,363	758,033	965,455	36,765	134,556
Other Expenses:						
In Kind Donations:						
Medicine and medical supplies	6,297,832	-	-	-	-	-
Educational materials	-	2,621,961	-	-	-	-
Food	-	-	-	-	1,346,658	-
Furniture and equipment	-	-	-	-	-	-
Emergency disaster	-	-	2,624,183	-	-	-
Program Expenses:						
Health and safety program expense	441,019	-	-	-	-	-
Education program expense	-	2,498,955	-	-	-	-
Emergency disaster program expense	-	-	1,075,104	-	-	-
Orphans sponsorship	-	-	-	3,974,929	-	-
Family assistance	-	-	-	-	-	-
Food baskets	-	-	-	-	842,644	-
Food baskets (Ramadan)	-	-	-	-	1,007,469	-
Meat (Udhiyah)	-	-	-	-	544,992	-
Water and sanitation program expense	-	-	-	-	-	227,629
Community development	-	-	-	-	-	-
Credit card processing and bank fees	1,650	1,812	120,885	153,963	5,863	21,458
Freight	56	62	4,121	5,248	200	731
Printing	2,574	2,827	394,342	240,210	12,597	33,478
Field office expenses	2,962	3,253	216,988	276,363	10,524	38,517
Software fees	1,082	1,188	79,241	100,924	3,843	14,066
Expenses Including Management and General						
Insurance	-	-	-	-	-	-
Professional fees	156	171	11,427	14,554	554	2,028
Rent	173	190	12,674	16,142	615	2,250
Repairs and maintenance	-	-	-	-	-	-
Telephone and internet	154	169	11,282	14,370	547	2,003
Utilities	-	-	-	-	-	-
Office expense and license fees	260	286	19,064	24,280	925	3,384
Media and communications	1,745	1,917	127,881	162,873	6,202	22,700
Bad debt expense	-	-	-	-	-	-
Depreciation	13	14	925	1,178	45	164
Postage and delivery fees	-	-	-	-	-	-
Travel	18	20	1,345	1,712	65	239
Fundraising Expenses:						
Fundraising event expenses	-	-	-	-	-	-
Marketing material	648	711	47,463	60,450	2,302	8,425
Total functional expenses	\$ 6,760,688	\$ 5,144,899	\$ 5,504,958	\$ 6,012,651	\$ 3,822,810	\$ 511,628

CONSOLIDATED STATEMENT OF FUNCTIONAL EXPENSES (Continued)
YEAR ENDED DECEMBER 31, 2023

	Program Services			Supporting Services		Total Functional Expenses
	Community Development Programs	Family Assistance Program	Total Program Services	Management and General	Fundraising	
Payroll Expenses:						
Compensation	\$ 17,910	\$ 4,871	\$ 1,549,358	\$ 354,139	\$ 309,872	\$ 2,213,369
Employment taxes and benefits	4,575	1,244	395,760	90,460	79,152	565,372
Total payroll expenses	22,485	6,115	1,945,118	444,599	389,024	2,778,741
Other Expenses:						
In Kind Donations:						
Medicine and medical supplies	-	-	6,297,832	-	-	6,297,832
Educational materials	-	-	2,621,961	-	-	2,621,961
Food	-	-	1,346,658	-	-	1,346,658
Furniture and equipment	4,019,943	-	4,019,943	-	-	4,019,943
Emergency disaster	-	-	2,624,183	-	-	2,624,183
Program Expenses:						
Health and safety program expense	-	-	441,019	-	-	441,019
Education program expense	-	-	2,498,955	-	-	2,498,955
Emergency disaster program expense	-	-	1,075,104	-	-	1,075,104
Orphans sponsorship	-	-	3,974,929	-	-	3,974,929
Family assistance	-	165,941	165,941	-	-	165,941
Food baskets	-	-	842,644	-	-	842,644
Food baskets (Ramadan)	-	-	1,007,469	-	-	1,007,469
Meat (Udhiyah)	-	-	544,992	-	-	544,992
Water and sanitation program expense	-	-	227,629	-	-	227,629
Community development	139,759	-	139,759	-	-	139,759
Credit card processing and bank fees	3,586	975	310,192	-	-	310,192
Freight	122	33	10,573	-	-	10,573
Printing	5,594	1,521	693,143	202,418	207,453	1,103,014
Field office expenses	6,436	1,750	556,793	-	-	556,793
Software fees	2,351	639	203,334	-	-	203,334
Expenses Including Management and General						
Insurance	-	-	-	26,316	-	26,316
Professional fees	339	92	29,321	289,745	-	319,066
Rent	376	102	32,522	-	21,681	54,203
Repairs and maintenance	-	-	-	19,340	-	19,340
Telephone and internet	335	91	28,951	19,300	-	48,251
Utilities	-	-	-	12,452	-	12,452
Office expense and license fees	565	154	48,918	61,657	-	110,575
Media and communications	3,793	1,032	328,143	113,111	165,020	606,274
Bad debt expense	-	-	-	30,477	-	30,477
Depreciation	27	7	2,373	18,806	-	21,179
Postage and delivery fees	-	-	-	51,415	5,441	56,856
Travel	40	11	3,450	18,543	198,002	219,995
Fundraising Expenses:						
Fundraising event expenses	-	-	-	-	321,383	321,383
Marketing material	1,408	383	121,790	121,791	4,248	247,829
Total functional expenses	\$ 4,207,159	\$ 178,846	\$32,143,639	\$ 1,429,970	\$ 1,312,252	\$ 34,885,861





BAL FAMILY FUN DAY
INDONESIA
2023

Thanks to our Supporters

We would like to extend our heartfelt thanks and gratitude for your support and participation in LIFE's humanitarian efforts. We also express our deep appreciation to our founders, whose vision recognized the urgent need to assist the impoverished and underserved worldwide. A sincere thank you goes to our dedicated staff, volunteers, donors, and partners whose collective efforts have saved lives, alleviated suffering, and contributed to the continued success of LIFE's work.



TERIMA KASIH